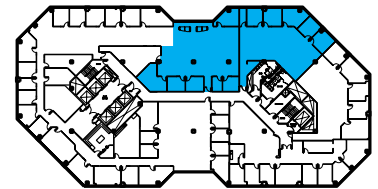
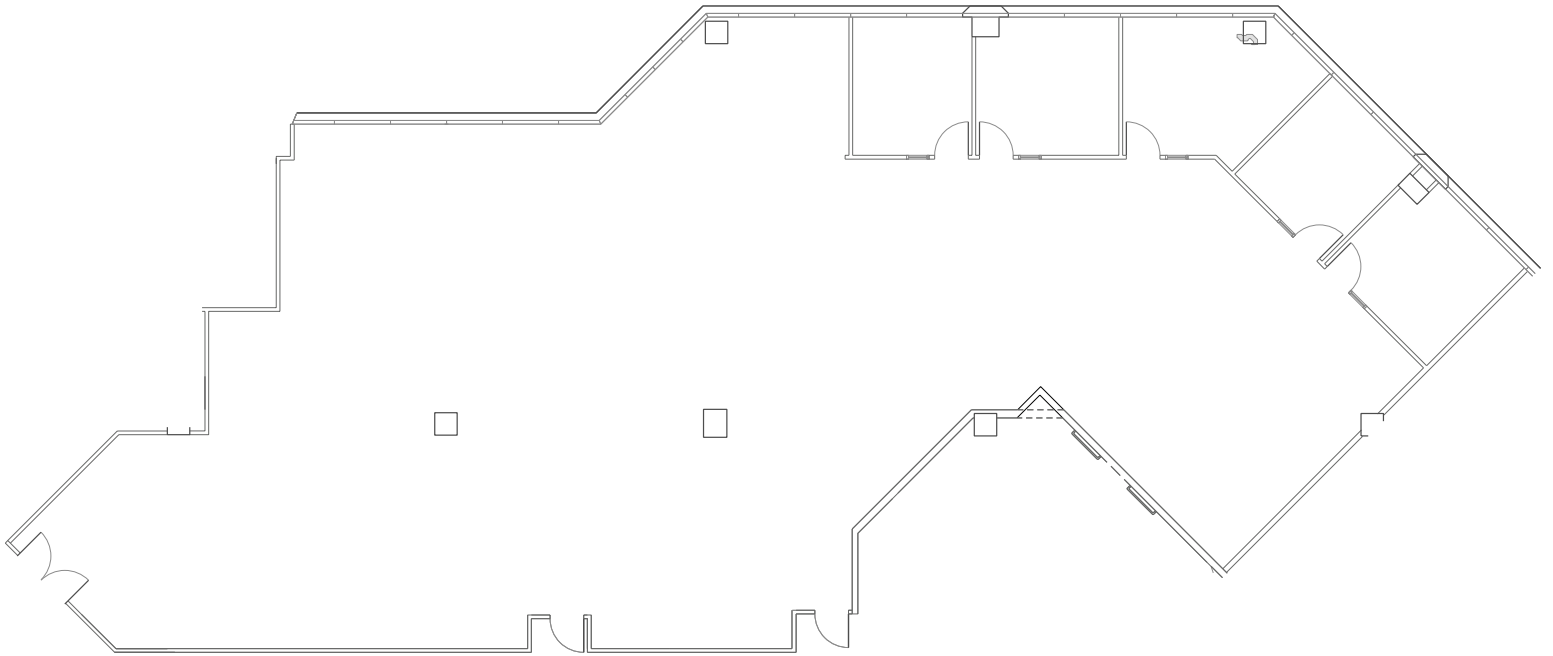


## Suite 1220 & 1230 ±6,023 RSF Available



**Breck Lutz** (925) 974-0109 blutz@ngkf.com CA RE License #00936859

**Alex Grell** (925) 974-0108 agrell@ngkf.com CA RE License #01222891

**NEWMARK**

1333 N. California Blvd, Suite 343 | Walnut Creek, CA 94596  
www.nmrk.com

**BRIDGE INVESTMENT GROUP**

The distributor of this communication is performing acts for which a real estate license is required. The information contained herein has been obtained from sources deemed reliable but has not been verified and no guarantee, warranty or representation, either express or implied, is made with respect to such information. Terms of sale or lease and availability are subject to change or withdrawal without notice.