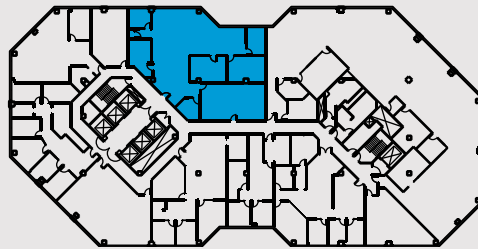
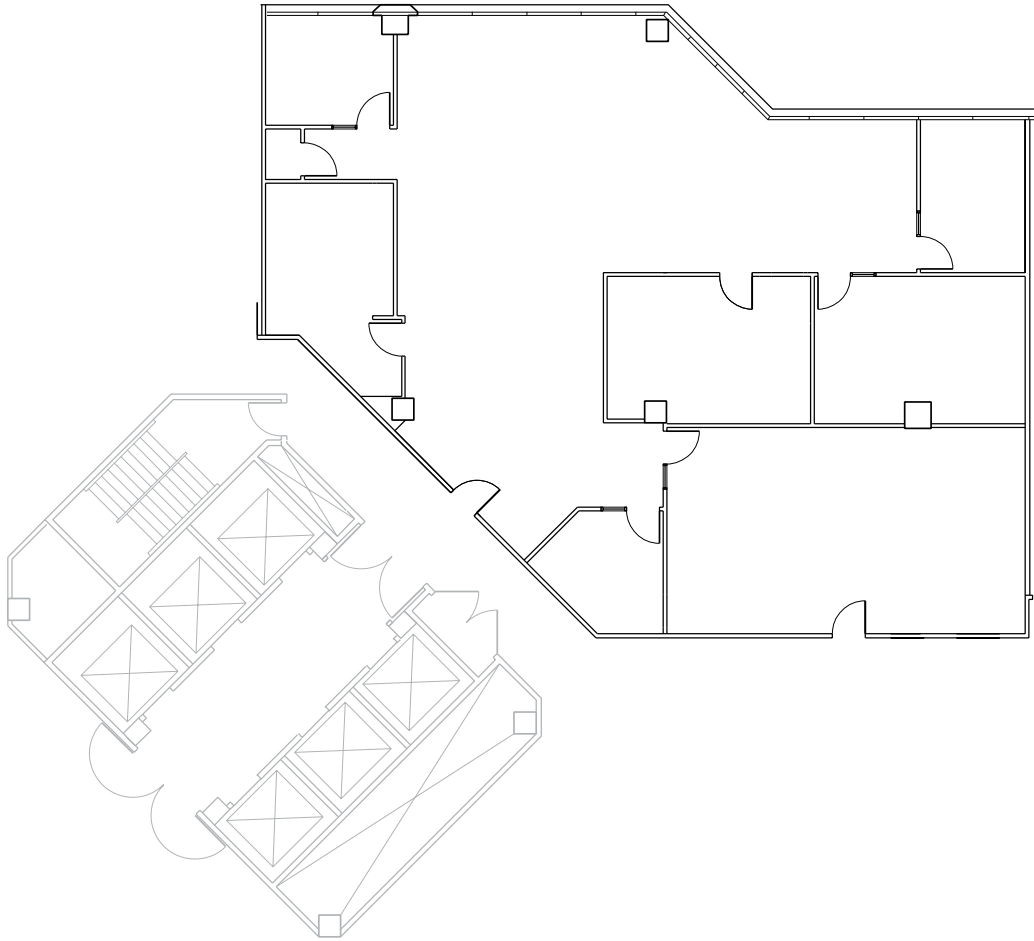


## Suite 570 ±3,868 RSF Available



**Breck Lutz** (925) 974-0109 breck.lutz@nmrk.com CA RE License #00936859

**Alex Grell** (925) 974-0108 alex.grell@nmrk.com CA RE License #01222891

**NEWMARK**

**BRIDGE INVESTMENT GROUP**